



Name:

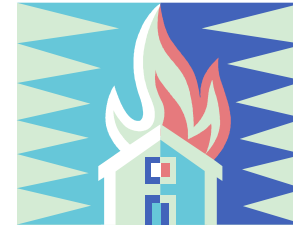
---

---

---

WritingWorkbooks.com

# *The Great Fire of London*



## *D'Nealian Print*

1. Charles 2nd was the King of England during the Great Fire.
2. The fire began in a bakery in Pudding Lane.
3. It quickly spread because of wooden buildings.
4. The strong wind that night soon spread the flames.
5. The fire brigades only had buckets of water to put out the fire.
6. Firebreaks were made by blowing up houses in the path of the fire.
7. The fire continued for several days before finally dying out.
8. It is said that only sixteen people perished in the blaze.
9. Over thirteen thousand houses were destroyed.
10. The fire put an end to the plague of 1665.



Charles 2nd was the King of  
England during the Great Fire.

Charles 2nd was the King of

England during the Great Fire.





The fire began in a  
bakery in Pudding Lane.

The fire began in a  
bakery in Pudding Lane.





It quickly spread because of wooden buildings.

It quickly spread because of wooden buildings.

It quickly spread because of wooden buildings.

It quickly spread because of wooden buildings.





The strong wind that night soon  
spread the flames.

The strong wind that night soon

spread the flames.





The fire brigades only had buckets of  
water to put out the fire.

The fire brigades only had buckets of  
water to put out the fire.





Firebreaks were made by blowing up  
houses in the path of the fire.

Firebreaks were made by blowing up

houses in the path of the fire.





The fire continued for several  
days before finally dying out.

The fire continued for several

days before finally dying out.







*It is said that only sixteen people  
perished in the blaze.*

*It is said that only sixteen people*

*perished in the blaze.*





Over thirteen thousand houses were destroyed.

Over thirteen thousand houses were destroyed.

Over thirteen thousand houses were destroyed.

Over thirteen thousand houses were destroyed.





The fire put an end to the plague of 1665.

The fire put an end to the plague of 1665.

The fire put an end to the plague of 1665.

The fire put an end to the plague of 1665.

